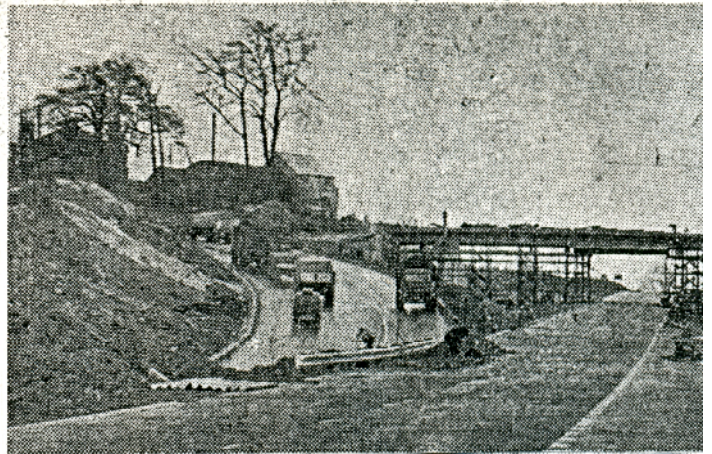




**LAST OF THE LORRIES.** Above, heavy lorries rumble through Bramham village, on the Great North-Rd., which will be by-passed next week by the opening of a mile-long stretch of single carriageway. The by-pass, right, forms part of the Aberford-Wetherby road improvement. (Yorkshire Post pictures.)



**FROM THE BY-PASS.** — A view of Bramham, a quieter village now, unobtainable before the new by-pass was made.

